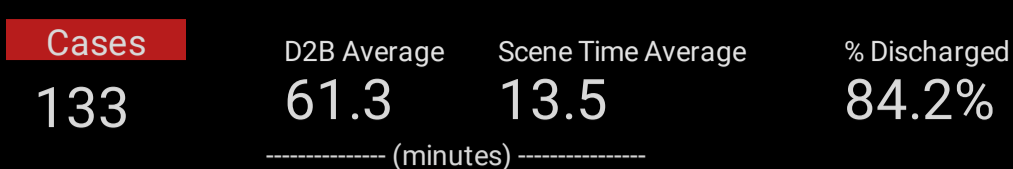
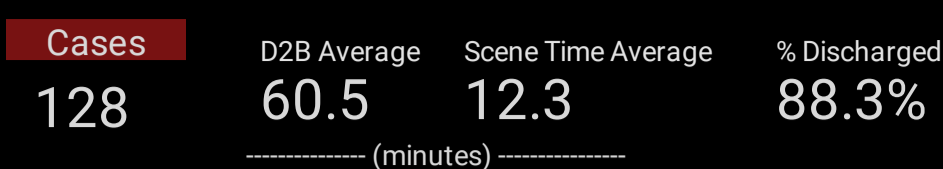


STEMI Overview

Quick STEMI Stats for:

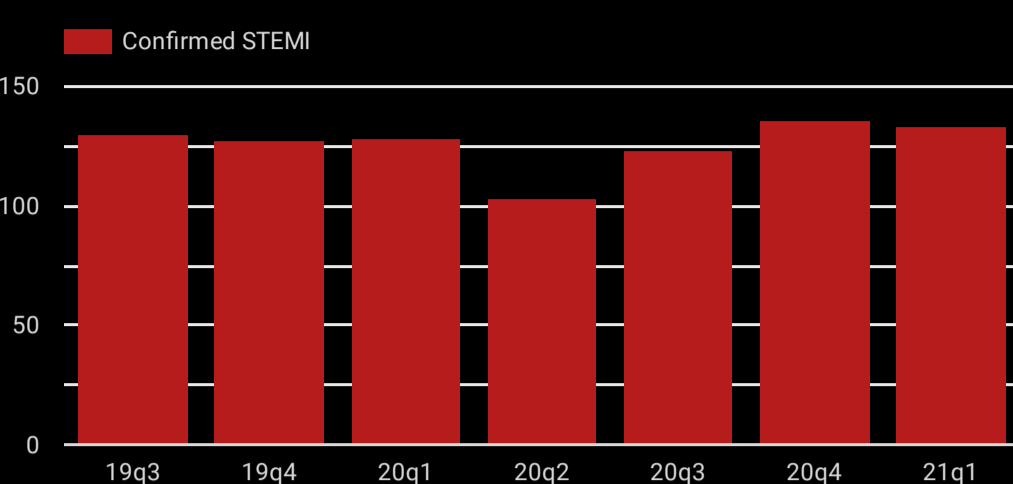


Stats of same quarter from prior year



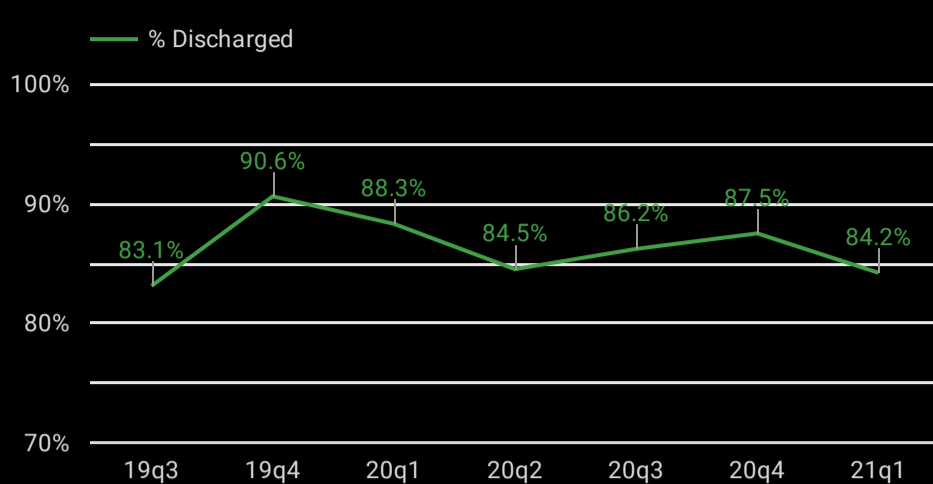
Confirmed STEMI Cases by Quarter

Source: Patient Registry



Adjusted Survival to Discharge Rate of STEMI Cases

EMS to STEMI Centers

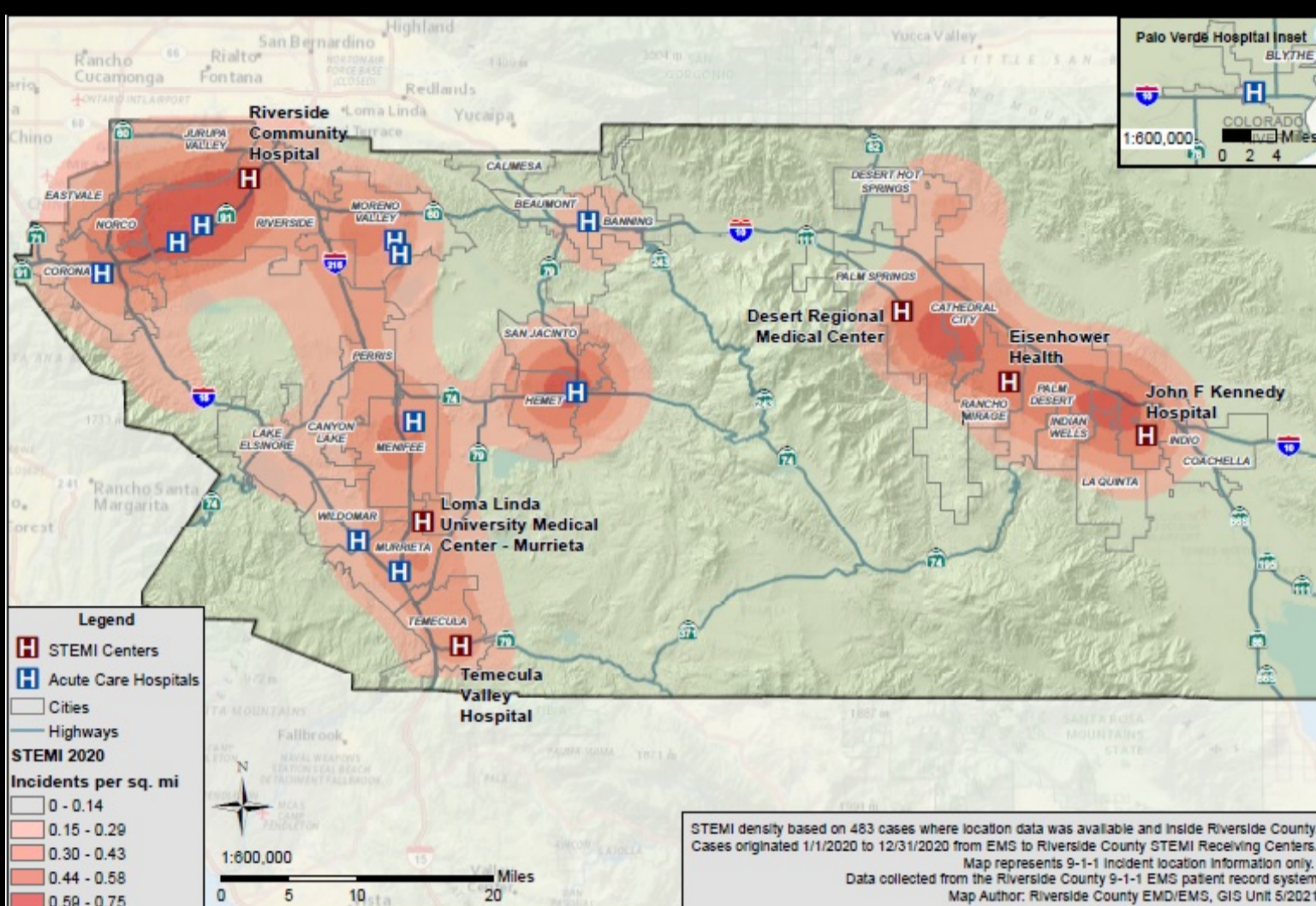


Overview of STEMI Snapshot

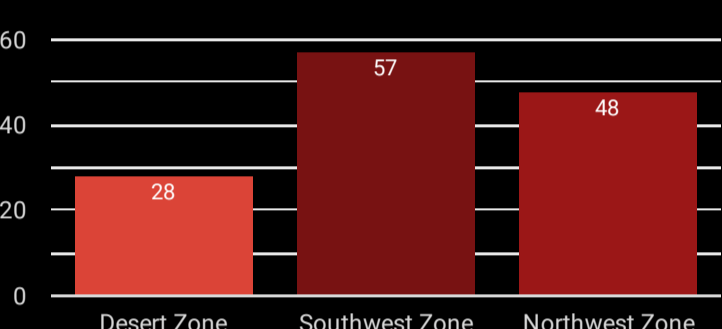
The Riverside County EMS STEMI System encompasses a network of prehospital 9-1-1 EMS providers and hospitals receiving STEMI patients. This snapshot focuses on patients who suffered confirmed STEMI heart attacks in Riverside County, with data being added quarterly and available for comparison on a continuous basis. Cases are those patients transported via 9-1-1 ambulances to Riverside County STEMI receiving centers. 9-1-1 Call locations from the confirmed cases for each quarter were collected and analyzed, illustrated to the right in the 2020 STEMI case density map. This map is intended to provide system context and to be used in conjunction with the metrics contained in this report.

Riverside County STEMI Receiving Centers and EMS STEMI Patient Density

Density based on 483 location-verified cases from 1/1/2020 to 12/31/20



Current Quarter's Volume by Zone



Quarterly Prehospital Data

2019 - 2020, EMS 9-1-1 data matched to STEMI center cases

Quarter Code	Confirmed STEMI	Scene Time Average	Scene Time Median	Scene Time 90th Percentile	EKG % Transmitted
19q3	130	11	10	17.4	85.4%
19q4	127	12.2	12	19.5	87.4%
20q1	128	12.3	11	19	81.3%
20q2	103	11.5	11	17.5	82.5%
20q3	123	11.6	11	19.4	81.3%
20q4	136	13.3	13	20	88.2%
21q1	133	13.5	13	22	84.2%

1 - 7 / 7

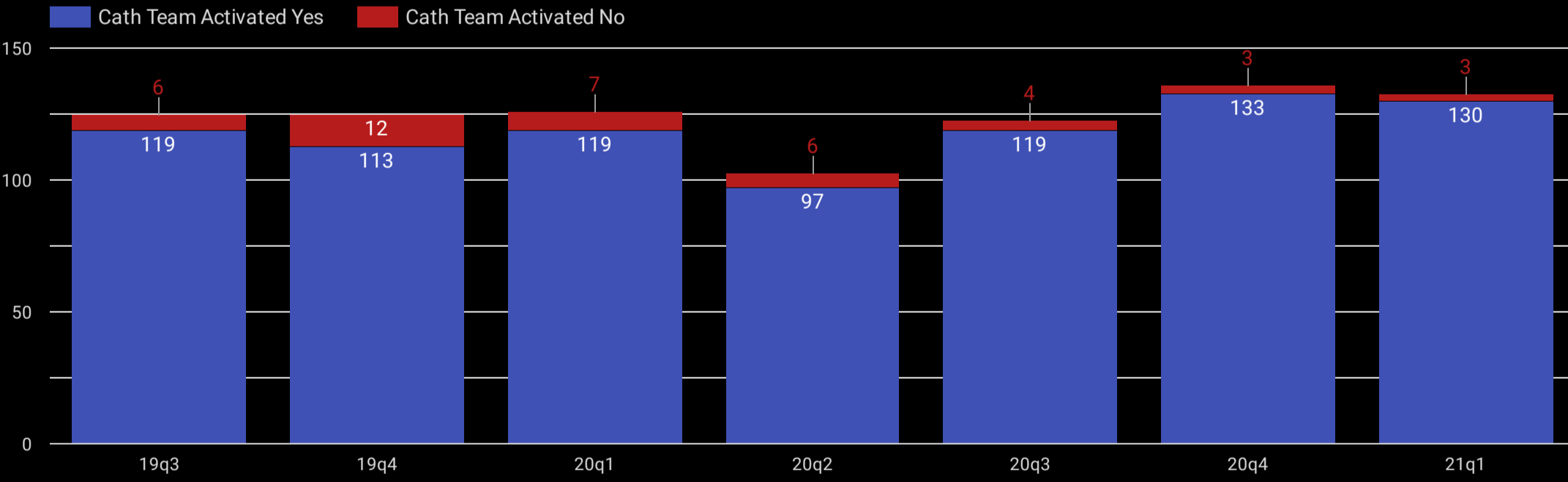
Quarter Code	Confirmed STEMI	D2B Average	D2B Median	D2B 90th Percentile	D2B % <90 Min	E2B Average	E2B Median	E2B 90th Percentile	E2B % <90 Min	% Discharged
19q3	130	76.9	59	105	84.4%	94.6	90.3	130.3	50%	83.1%
19q4	127	60.4	61	79	94.7%	89.4	88	116.5	54.9%	90.6%
20q1	128	60.5	54	100.4	88.6%	91.1	84	128.2	62.7%	88.3%
20q2	103	63.2	59	86.8	90.7%	93.4	88	124	56%	84.5%
20q3	123	73.4	58	135.1	84.3%	96.2	87	141.5	55.7%	86.2%
20q4	136	61	57	87	89.9%	94.2	92	119	47.6%	87.5%
21q1	133	61.3	53	93.2	87.2%	90.4	84	128	59.6%	84.2%

*D2B and E2B - Average and Median displayed in minutes

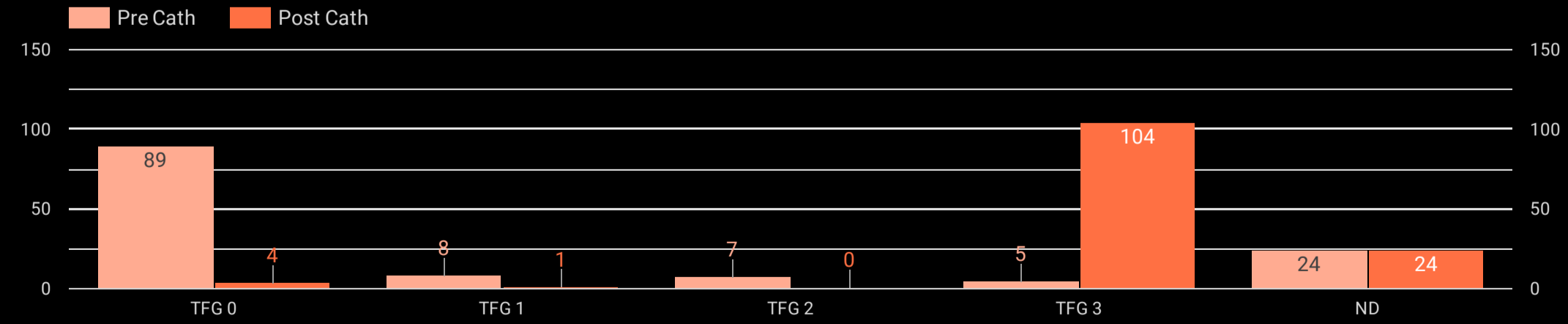
1 - 7 / 7

Cath Team Activated Prior to Arrival

Source: ImageTrend Patient Registry



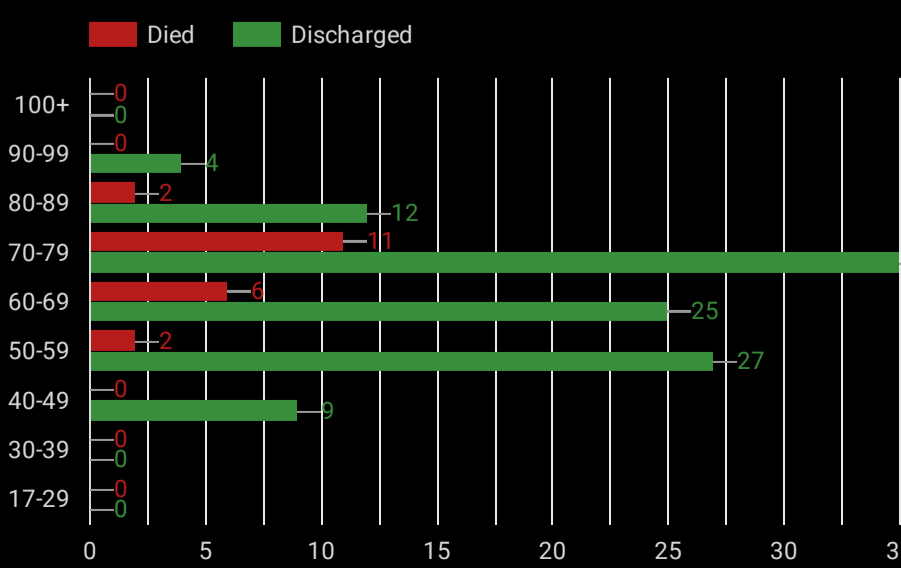
TIMI Flow Grade - Pre and Post Cath, 2021 Q1



*Not documented (ND) cases are patients who initially qualified as a reperfusion candidate but not reperfused due to qualifying reasons

Survival by Age Group, 2021 Q1

Source: Patient Registry



Cases by Gender and Age Group, 2021 Q1

Source: Patient Registry

